



ti FITTINGS
TUBES INDIA SUBSIDIARY



OUR PRODUCT RANGE



STANDARD:

ASME : ANSI B16.9, ANSI B16.28, ANSI B16.11
ANSI B16.5, BS 3599, MSS-SP-75

MATERIALS:

Carbon Steel (Low Temperature Service)

ASME : SA420 Gr. WPL6 (Butt Weld Fitting)
SA350 Gr. LF1-2-3, (Socket Weld Fitting & Flange)

Carbon Steel (High Temperature Service)

ASME : SA234 Gr. WPB (Butt Weld Fitting)
SA105 (Socket Weld Fitting & Flange)

Alloys Steel (High Temperature Service)

ASME : SA234 Gr. WP11-22 (Butt Weld Fitting)
SA182 Gr. F22 (Socket Weld Fitting & Flange)

Stainless Steel

ASME : SA403 Gr. WP321-TP304, 316 (Butt Weld Fitting)
SA182 Gr. F321-TP304, 316 (Socket Weld Fitting & Flange)

FITTINGS:

Butt Weld Seamless

Elbow, Tee, Caps, Reducer
1/2" to 24" NB
SCH-40, 80, 160 (Thickness)

Socket Weld / NPT Treaded

Elbow, Tee, Socket, Union, Cross
Weldolet, Thredolet, Elbolet, Nippolet
1/4" to 4" NB

3000 LBS, 6000 LBS, 9000 LBS

FLANGES :

SORF, BLRF, SOFF, SWRF, WNRF,
LAP-JOINT, RING JOINT,
ND-6, ND-10, ND-16, ND-40
Tab-E, Tab-F, Tab-H, Tab-J



NON-IBR & IBR Certification

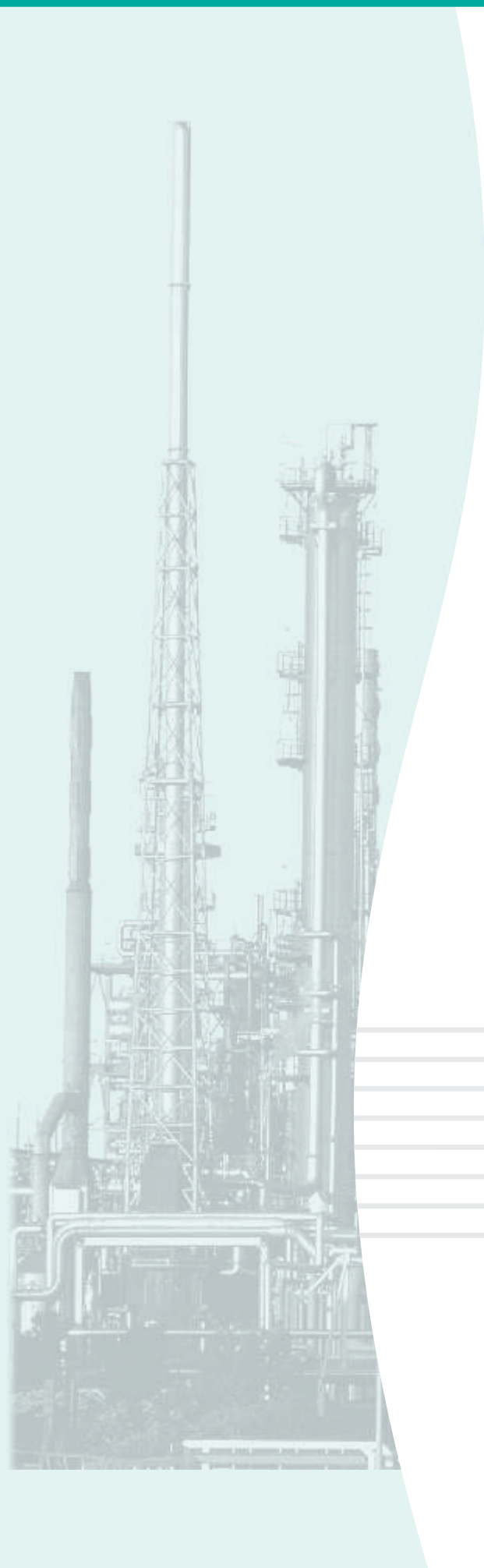
ABOUT US...

TI Fittings is a proud subsidiary of Tubes India, a trusted name in the piping industry with over 50 years of experience in supplying and stocking high-quality piping materials. Over the decades, Tubes India has built a strong reputation for reliability and excellence in dealing with Carbon Steel, Stainless Steel, and Alloy Steel products, catering to diverse sectors including power, petrochemical, engineering, infrastructure, and process industries.

Our Fittings Division, operating under TI Fittings, specializes in the manufacturing, stocking, and supply of IBR and Non-IBR Pipe Fittings. We offer a comprehensive range of fittings designed to meet stringent industry standards and project requirements, ensuring durability, precision, and performance.

With a strong inventory, robust sourcing network, and commitment to quality, we serve as a dependable partner for both domestic and international clients. Our products undergo strict quality checks and can be supported with third-party inspection as per customer specifications.

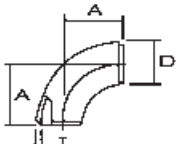
Backed by decades of industry expertise, TI Fittings continues to uphold the legacy of Tubes India by delivering quality products, timely service, and trusted solutions for critical piping applications.



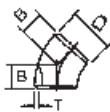


BUTT WELDING PIPE FITTING DIMENSIONAL STANDARD

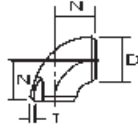
ANSI B-16.9 / 16.28 / MSS SP-43



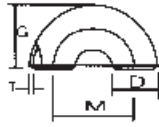
90 Elbow
long radius



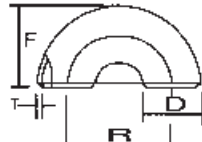
45 Elbow



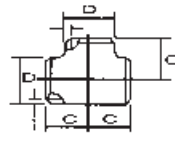
90 Elbow
short radius



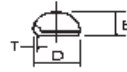
180 Return Bend
short radius



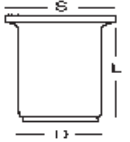
180 Return Bend
long radius



Tee equal



Caps

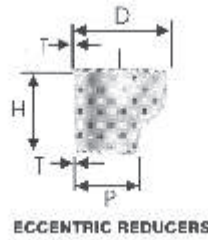
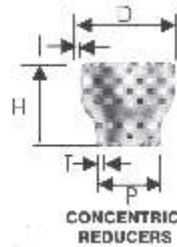
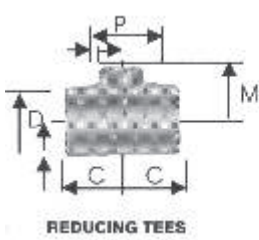


Stub end

Nominal Pipe Size		Outside Diameter D	Center to Face				Back to Face			Center to Center			Length 'L'	
Inch.	mm		A	B	C	N	E	F	G	R	M	S	MSS SP43	ANSI B 16.9
1/2	15	21.3	38	16	25	--	25	48	--	76	--	34.9	50.8	76.2
3/4	20	26.7	29	11	29	--	25	43	--	57	--	42.8	50.8	76.2
1	25	33.4	38	22	38	25	38	56	41	76	51	50.8	50.8	101.6
1 1/4	32	42.2	48	25	48	32	38	70	52	95	64	63.5	50.8	101.6
1 1/2	40	48.3	57	29	57	38	38	83	62	114	76	73	50.8	101.6
2	50	60.3	76	35	64	51	38	106	81	152	102	92	63.5	152.4
2 1/2	65	73	95	44	76	64	38	132	100	191	127	104.8	63.5	152.4
3	80	88.9	114	51	86	76	51	159	121	229	152	127	63.5	152.4
3 1/2	90	101.6	133	57	95	89	64	184	140	267	178	139.7	76.2	152.4
4	100	114.3	152	64	105	102	64	210	159	305	203	157.2	76.2	152.4
5	125	141.3	190	79	124	127	76	262	197	381	254	185.7	76.2	203.2
6	150	168.3	229	95	143	152	89	313	237	457	305	215.9	88.9	203.2
8	200	219.1	305	127	178	203	102	414	313	610	406	270	101.6	203.2
10	250	273.1	381	159	216	254	127	518	391	762	508	324	127.0	254.0
12	300	323.9	457	190	254	305	152	619	467	914	610	381	152.4	254.0
14	350	355.6	533	222	279	356	165	711	533	1067	711	412.8	152.4	305.0
16	400	406.4	610	254	305	406	178	813	610	1219	813	470	152.4	305.0
18	450	457.2	686	286	343	457	203	914	686	1372	914	533.4	152.4	305.0
20	500	508.0	762	318	381	508	229	1016	762	1524	1016	584.2	152.4	305.0
22	550	559.0	838	343	419	559	254	1118	838	1676	1118	614.4	152.4	305.0
24	600	610.0	914	381	432	610	267	1219	914	1829	1219	692.2	152.4	305.0
26	650	660.0	991	406	495	660	267							
28	700	711.0	1067	438	521	711	267							
30	750	762.0	1143	470	559	762	267							
32	800	813.0	1219	502	597	813	267							
34	850	864.0	1295	533	635	864	267							
36	900	914.0	1372	565	673	914	267							
38	950	965.0	1448	600	711	965	305							
40	1000	1016.0	1524	632	749	1016	305							
42	1050	1067.0	1600	660	762	1067	305							
44	1100	1118.0	1676	695	813	1118	343							
46	1150	1168.0	1753	727	851	1168	343							
48	1200	1219.0	1829	759	889	1219	343							



BUTT - WELDING PIPE FITTINGS ANSI B 16.9 / 16.28



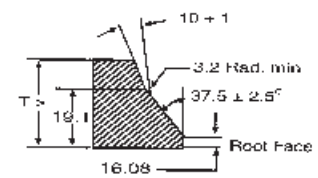
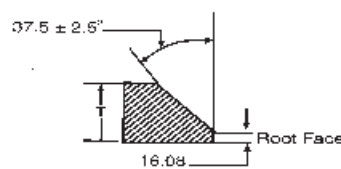
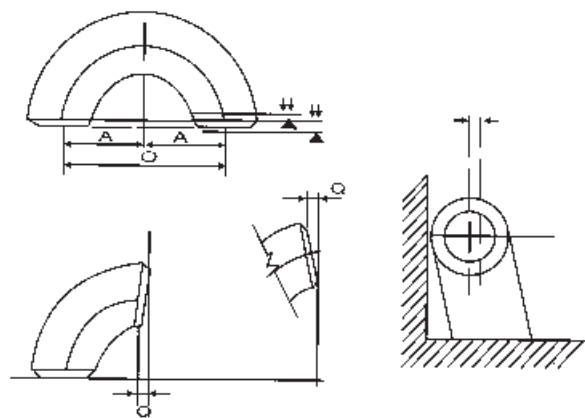
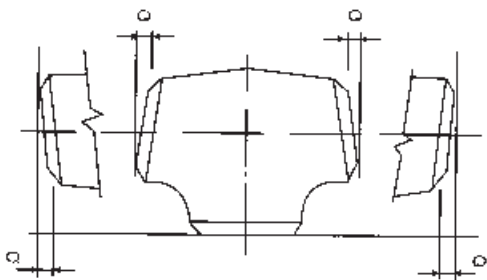
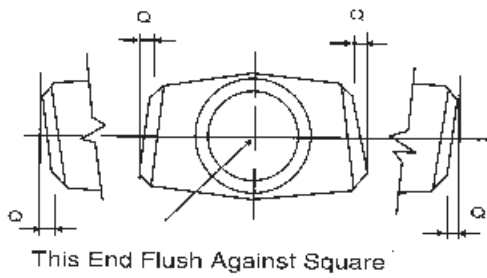
Nominal Pipe Size		Outside Diameter		Center to End		Length
Inch.	mm	D	P	C	M	
1/2 x 3/8	15 x 10	21.3	17.1	25	25	
1/2 x 1/4	15 x 8	21.3	13.7	25	25	
3/4 x 1/2	20 x 15	26.7	21.3	29	29	38
3/4 x 3/8	20 x 10	26.7	17.1	29	29	38
1 x 3/4	25 x 20	33.4	26.7	38	38	51
1 x 1/2	25 x 15	33.4	21.3	38	38	51
1 1/4 x 1	32 x 25	42.2	33.4	48	48	51
1 1/4 x 3/4	32 x 20	42.2	26.7	48	48	51
1 1/4 x 1/2	32 x 15	42.2	21.3	48	48	51
1 1/2 x 1 1/2	40 x 32	48.3	42.2	57	57	64
1 1/2 x 1	40 x 25	48.3	33.4	57	57	64
1 1/2 x 3/4	40 x 20	48.3	26.7	57	57	64
1 1/2 x 1/2	40 x 15	48.3	21.3	57	57	64
2 x 1 1/2	50 x 40	60.3	48.2	64	60	76
2 x 1 1/4	50 x 32	60.3	42.2	64	57	76
2 x 1	50 x 25	60.3	33.4	64	51	76
2 x 3/4	50 x 20	60.3	26.7	64	44	76
2 1/2 x 2	65 x 50	73.0	60.3	76	70	89
2 1/2 x 1 1/2	65 x 40	73.0	48.3	76	67	89
2 1/2 x 1 1/4	65 x 32	73.0	42.2	76	64	89
2 1/2 x 1	65 x 25	73.0	33.4	76	57	89
3 x 2 1/2	80 x 65	88.9	73.0	86	83	89
3 x 2	80 x 50	88.9	60.3	86	76	89
3 x 1 1/2	80 x 40	88.9	48.3	86	73	89
3 x 1 1/4	80 x 32	88.9	42.2	86	70	89
3 1/2 x 3	90 x 80	101.6	88.9	95	92	102
3 1/2 x 2 1/2	90 x 65	101.6	73.0	95	89	102
3 1/2 x 2	90 x 50	101.6	60.3	95	83	102
3 1/2 x 1 1/2	90 x 40	101.6	48.3	95	79	102
3 1/2 x 1 1/4	90 x 32	101.6	42.2	-	-	102
4 x 3 1/2	100 x 90	114.3	101.6	105	102	102
4 x 3	100 x 80	114.3	88.9	105	98	102
4 x 2 1/2	100 x 65	114.3	73.0	105	95	102
4 x 2	100 x 50	114.3	60.3	105	89	102
4 x 1 1/2	100 x 40	114.3	48.3	105	86	102
5 x 4	125 x 100	141.3	114.3	124	117	127
5 x 3 1/2	125 x 90	141.3	101.6	124	114	127
5 x 3	125 x 80	141.3	88.9	124	111	127
5 x 2 1/2	125 x 65	141.3	73.0	124	108	127
5 x 2	125 x 50	141.3	60.3	124	105	127
6 x 5	150 x 125	168.3	141.3	143	137	140
6 x 4	150 x 100	168.3	114.3	143	130	140
6 x 3 1/2	150 x 90	168.3	101.6	143	127	140
6 x 3	150 x 80	168.3	88.9	143	124	140
6 x 2 1/2	150 x 65	168.3	73.0	143	121	140

Nominal Pipe Size		Outside Diameter		Center to End		Length
Inch.	mm	D	P	C	M	
8x6	200x150	219.1	168.3	178	168	152
8x5	200x125	219.1	141.3	178	162	152
8x4	200x100	219.1	114.3	178	156	152
8x3 1/2	200x90	219.1	101.6	178	152	152
10x8	250x200	273.1	219.1	216	203	178
10x6	250x150	273.1	168.1	216	194	178
10x5	250x125	273.1	141.3	216	191	178
10x4	250x100	273.1	114.3	216	184	178
12x10	300x250	323.9	273.1	254	241	203
12x8	300x200	323.9	219.1	254	229	203
12x6	300x150	323.9	168.3	254	219	203
12x5	300x125	323.9	141.3	254	216	203
14x12	350x300	355.6	323.9	279	270	330
14x10	350x250	355.6	273.1	279	257	330
14x8	350x200	355.6	219.1	279	248	330
14x6	350x150	355.6	168.3	279	238	330
16x14	400x350	406.4	355.6	305	305	356
16x12	400x300	406.4	323.9	305	295	356
16x10	400x250	406.4	273.1	305	283	356
16x8	400 x 200	406.4	219.1	305	273	356
16x6	400x150	406.4	168.3	305	264	356
18x16	450x400	457.0	406.4	343	330	381
18x14	450x350	457.0	355.6	343	330	381
18x12	450x300	457.0	323.9	343	321	381
18x10	450x250	457.0	273.1	343	308	381
18x8	450x200	457.0	219.1	343	298	381
20x18	500x450	508.0	457.0	381	368	508
20x16	500x400	508.0	406.4	381	356	508
20x14	500x350	508.0	355.6	381	356	508
20x12	500x300	508.0	323.9	381	346	508
20x10	500x250	508.0	273.1	381	333	508
20x8	500x200	508.0	219.1	381	324	508
22x20	550x500	559.0	508.0	419	406	508
22x18	550x450	559.0	457.0	419	394	508
22x16	550x400	559.0	406.4	419	381	508
22x14	550x350	559.0	355.6	419	381	508
22x12	550x300	559.0	323.9	419	371	508
24x10	550x250	559.0	273.1	419	359	508
24x22	600x550	610.0	559.0	432	432	508
24x20	600x500	610.0	508.0	432	432	508
24x18	600x450	610.0	457.0	432	419	508
24x16	600x400	610.0	406.4	432	406	508
24x14	600x350	610.0	355.6	432	406	508
124x12	600x300	610.0	323.9	432	397	508
124x10	600x250	610.0	273.1	432	384	508

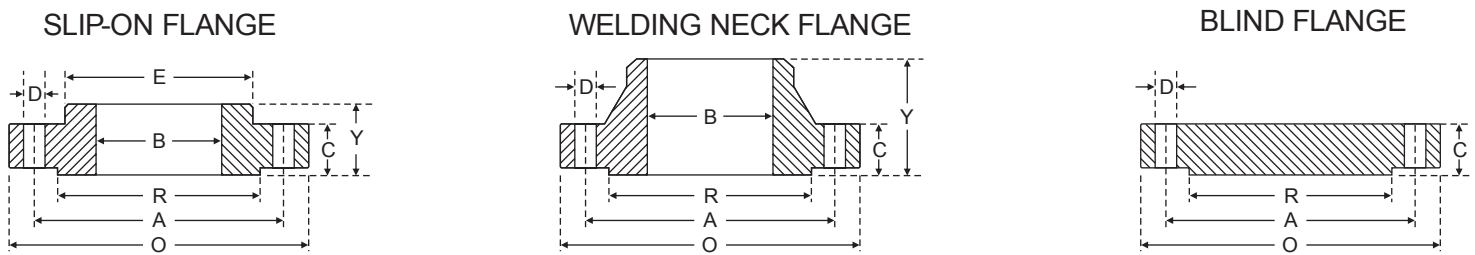


DIMENSIONAL TOLERANCES AS PER ANSI B 16.9 / B 16.28 / MSS SP-43 BUTT WELD FITTING

ALL FITTINGS				90°/60° 45°/30° ELBOWS & TEES		REDUCERS		180° RETURNS				CAPS		ANGULARITY TOLERANCE							
Nominal Pipe Size Inch/mm	Outside Diameter at Level		Outside Dia meter	Wall Thickness at End		Centre to End		Overall Length Dimensions		Centre to End		Back to Face Dimensions		Alignment of End Dimensions		Overall Length		Nominal Pipe Size	Off Angle Inch/mm		Off Plane
	D		T	A,B,C,M		H		O		K		U		E		Q		P			
	(1) B16.9	MSS SP43	(2) B16.9	B16.9	MSS SP43	B16.9	MSS SP43	B16.9	MSS SP43	B16.9	MSS SP43	B16.9	MSS SP43	B16.9	MSS SP43	B16.9	MSS SP43	B16.9	MSS SP43	B16.9	
1/2" to 2 1/2" 15 to 65	± 1.0		± 0.8			FROM 1/2" to 10" 15 to 250	FROM 3/4"	FROM 1/2" to 10" 15 to 250	FROM 1/2" to 8" 15 to 200						± 4	± 3.17		1/2" to 4" 15 to 100	1		1
3" to 3 1/2" 80 to 90		± 0.79																5" to 8" 125 to 200	2		4
4" 100	+ 2 - 1		± 1.6			± 2	± 1.59	± 2	± 1.59	± 7	± 6.35	± 7	± 6.35	± 1	± 0.79			10" to 12" 250 to 300	3		5
5" to 6" 125 to 150	+ 3 - 1	+ 0.79				FROM 3/4"										± 6.35	± 6.35	14" to 16" 350 to 400	3	16" to 24" 400 to 600	7
8" 200	± 2	-1.59		Not Less than 87.5% Nom. Thk.	Not Less than 87.5% Nom. Thk.	FROM 3/4"												18" to 24" 450 to 600	4	1.6	10
10" to 18" 250 to 450	+ 4 - 3	+ 2.38 - 0.79	± 3.2			FROM 12" to 30" ± 3	± 2.38	FROM 12" to 30" ± 3	FROM 10" to 24" ± 2.38									26" to 30" 650 to 750	5	26" to 36" 650 to 900	10
20" to 24" 500 to 600	+ 6 - 5	3.17 0.79				FROM 300 to 750		FROM 300 to 750	FROM 250 to 600	± 10"	± 9.53"			± 2.0"	± 1.59"			32" to 42" 800 to 1050	5	2.4	13
26" to 30" 650 to 750	+ 7 - 5		± 4.8													± 10"		44" to 48" 1100 to 1200	5	38" to 48" 950 to 1200	20
32" to 48" 800 to 1200	+ 7 - 5					+ 5												42" to 48" 1050 to 1200	± 5	3.2	± 20



DIMENSION OF CLASS 150 & 300 FLANGE (B 16.5)



Dimension of Class 150 Flanges as per ANSI B 16.5

Nominal Pipe Size	Flange Dia	Dia of Bolt Circle	Dia of Bolt Holes	No. of Holes	Thk of Flange	Dia. of Hub	Length through Hub			Dia of Bore		Dia of R/F	Depth of Socket
							S/O & S/W	W/N	L/J	S/O & S/W	L/J		
	O	A	D		C	E	Y	Y	Y	B	B	R	F
15	88.9	60.3	15.9	4	11.1	30.2	15.9	47.6	15.9	22.3	22.9	34.9	9.5
20	98.4	69.8	15.9	4	12.7	38.1	15.9	52.4	15.9	27.7	28.2	42.9	11.1
25	107.9	79.4	15.9	4	14.3	49.2	17.5	55.6	17.5	34.5	35.0	50.8	12.7
32	117.5	88.9	15.9	4	15.9	58.7	20.6	57.1	20.6	43.2	43.7	63.5	14.3
40	127.0	98.4	15.9	4	17.5	65.1	22.2	61.9	22.2	49.5	50.0	73.0	15.9
50	152.4	120.6	19.0	4	19.0	77.8	25.4	63.5	25.4	62.0	62.5	92.1	17.5
65	177.8	139.7	19.0	4	22.2	90.5	28.6	69.8	28.6	74.7	75.4	104.8	19.0
80	190.5	152.4	19.0	4	23.8	107.9	30.2	69.8	30.2	90.7	91.4	127.0	20.6
100	228.6	190.5	19.0	8	23.8	134.9	33.3	76.2	33.3	116.1	116.8	157.2	23.8
125	254.0	215.9	22.2	8	23.8	163.5	36.5	88.9	36.5	143.8	144.5	185.7	23.8
150	279.4	241.3	22.2	8	25.4	192.1	39.7	88.9	39.7	170.7	171.4	215.9	27.0
200	342.9	298.4	22.2	8	28.6	246.1	44.4	101.6	44.4	221.5	222.2	269.9	31.7
250	406.4	361.9	25.4	12	30.2	304.8	49.2	101.6	49.2	276.3	277.4	323.8	33.3
300	482.6	431.8	25.4	12	31.8	365.1	55.6	114.3	55.6	327.1	328.2	381.0	39.7
350	533.4	476.2	28.6	12	34.9	400.0	57.1	127.0	79.4	359.1	360.2	412.7	41.3
400	596.9	539.7	28.6	16	36.5	457.2	63.5	127.0	87.3	410.5	411.2	469.9	44.4
450	635.0	577.8	31.7	16	39.7	504.8	68.3	139.7	96.8	461.8	462.3	533.4	49.2
500	698.5	635.0	31.7	20	42.9	558.8	73.0	144.5	103.2	513.1	514.3	584.2	54.0
600	812.8	749.3	34.9	20	47.6	663.6	82.5	152.4	111.1	615.9	615.9	692.1	63.5

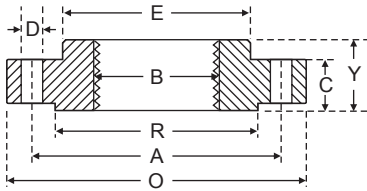
Dimension of Class 300 Flanges as per ANSI B 16.5

Nominal Pipe Size	Flange Dia	Dia of Bolt Circle	Dia of Bolt Holes	No. of Holes	Thk of Flange	Dia. of Hub	Length through Hub			Dia of Bore		Dia of R/F	Depth of Socket
							S/O & S/W	W/N	L/J	S/O & S/W	L/J		
	O	A	D		C	E	Y	Y	Y	B	B	R	F
15	95.2	66.7	15.9	4	14.3	38.1	22.2	52.4	22.2	22.3	22.9	34.9	9.5
20	117.5	82.5	19.0	4	15.9	47.6	25.4	57.1	25.4	27.7	28.2	42.9	11.1
25	123.8	88.9	19.0	4	17.5	54.0	27.0	61.9	27.0	34.5	35.0	50.8	12.7
32	133.3	98.4	19.0	4	19.0	63.5	27.0	65.1	27.0	43.2	43.7	63.5	14.3
40	155.6	114.3	22.2	4	20.6	69.8	30.2	68.3	30.2	49.5	50.0	73.0	15.9
50	165.1	127.0	19.0	8	22.2	84.1	33.3	69.8	33.3	62.0	62.5	92.1	17.5
65	190.5	149.2	22.2	8	25.4	100.0	38.1	76.2	38.1	74.7	75.4	104.8	19.0
80	209.5	168.3	22.2	8	28.6	117.5	42.9	79.4	42.9	90.7	91.4	127.0	20.6
100	254.0	200.0	22.2	8	31.8	146.0	47.6	85.7	47.6	116.1	116.8	157.2	23.8
125	279.4	234.9	22.2	8	34.9	177.8	50.8	98.4	50.8	143.8	144.5	185.7	—
150	317.5	269.9	22.2	12	36.5	206.4	52.4	98.4	52.4	170.7	171.4	215.9	—
200	381.0	330.2	25.4	12	41.3	260.3	61.9	111.1	61.9	221.5	222.2	269.9	—
250	444.5	387.3	28.6	16	47.6	320.7	66.7	117.5	95.2	276.3	277.4	323.8	—
300	520.7	450.8	31.7	16	50.8	374.6	73.0	130.2	101.6	327.1	328.2	381.0	—
350	584.2	514.3	31.7	20	54.0	425.4	76.2	142.9	111.1	359.1	360.2	412.7	—
400	647.7	571.5	34.9	20	57.2	482.6	82.5	146.0	120.6	410.5	411.2	469.9	—
450	711.2	628.5	34.9	24	60.3	533.4	88.9	158.7	130.2	461.8	462.3	533.4	—
500	774.7	685.8	34.9	24	63.5	587.4	95.2	161.9	139.7	513.1	514.3	584.2	—
600	914.4	812.8	41.3	24	69.8	701.7	106.4	168.3	152.4	615.9	615.9	692.1	—

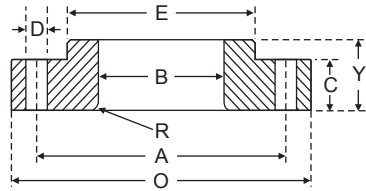


DIMENSION OF CLASS 600 & 900 FLANGE (B 16.5)

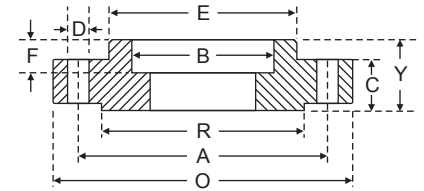
THREADED FLANGE



LAP JOINT FLANGE



SOCKET WELD FLANGE



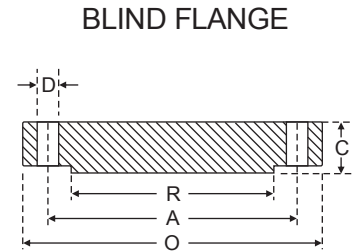
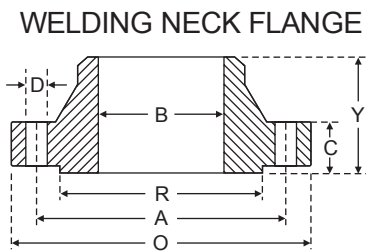
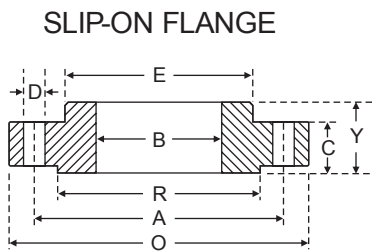
Dimension of Class 600 Flanges as per ANSI B 16.5

Nominal Pipe Size	Flange Dia	Dia of Bolt Circle	Dia of Bolt Holes	No. of Holes	Thk of Flange	Dia. of Hub	Length through Hub			Dia of Bore		Dia of R/F	Depth of Socket
							S/O & S/W	W/N	L/J	S/O & S/W	L/J		
	O	A	D		C	E	Y	Y	Y	B	B	R	F
15	95.2	66.7	15.9	4	14.3	38.1	22.2	52.4	22.3	22.3	22.8	34.9	9.5
20	117.5	82.5	19.0	4	15.9	47.6	25.4	57.1	25.4	27.7	28.1	42.9	11.1
25	123.8	88.9	19.0	4	17.5	54.0	27.0	61.9	26.9	34.5	35.0	50.8	12.7
32	133.3	98.4	19.0	4	20.6	63.5	28.6	66.7	28.4	43.2	43.6	63.5	14.2
40	155.6	114.3	22.2	4	22.2	69.8	31.7	69.8	31.7	49.5	50.0	73.0	15.8
50	165.1	127.0	19.0	8	25.4	84.1	36.5	73.0	36.5	62.0	62.4	92.1	17.4
65	190.5	149.2	22.2	8	28.6	100.0	41.3	79.4	41.1	74.7	75.4	104.8	19.0
80	209.5	168.3	22.2	8	31.8	117.5	46.0	82.5	45.9	90.7	91.4	127.0	–
100	273.0	215.9	25.4	8	38.1	152.4	54.0	101.6	53.8	116.1	116.8	157.2	–
125	330.2	266.7	28.6	8	44.4	188.9	60.3	114.3	60.4	143.8	141.5	185.7	–
150	355.6	292.1	28.6	12	47.6	222.2	66.7	117.5	66.5	170.7	171.4	215.9	–
200	419.1	349.2	31.7	12	55.6	273.0	76.2	133.3	76.2	221.5	222.2	269.9	–
250	508.0	431.8	34.9	16	63.5	342.9	85.7	152.4	111.2	276.3	277.3	323.8	–
300	558.8	488.9	34.9	20	66.7	400.0	92.1	155.6	117.3	327.1	328.1	381.0	–
350	603.2	527.0	38.1	20	69.9	431.8	93.7	165.1	127.0	359.1	360.1	412.7	–
400	685.8	603.2	41.3	20	76.2	495.3	106.4	177.8	139.7	410.5	411.2	469.9	–
450	742.9	654.0	44.4	20	82.6	546.1	117.5	184.1	152.4	461.8	462.2	533.4	–
500	812.8	723.9	44.4	24	88.9	609.6	127.0	190.5	165.1	513.1	514.3	584.2	–
600	939.8	838.2	50.8	24	101.6	717.5	139.7	203.2	184.1	615.9	615.9	692.1	–

Dimension of Class 900 Flanges as per ANSI B 16.5

Nominal Pipe Size	Flange Dia	Dia of Bolt Circle	Dia of Bolt Holes	No. of Holes	Thk of Flange	Dia. of Hub	Length through Hub			Dia of Bore		Dia of R/F	Depth of Socket
							S/O & S/W	W/N	L/J	S/O & S/W	L/J		
	O	A	D		C	E	Y	Y	Y	B	B	R	F
15	120.6	82.5	22.2	4	22.2	38.1	31.7	60.3	31.7	22.3	22.8	34.9	9.5
20	130.2	88.9	22.2	4	25.4	44.4	34.9	69.8	35.0	27.7	28.1	42.9	11.1
25	149.2	101.6	25.4	4	28.6	52.4	41.3	73.0	41.1	34.5	35.0	50.8	12.7
32	158.7	111.1	25.4	4	28.6	63.5	41.3	73.0	41.1	43.2	43.6	63.5	14.2
40	177.8	123.8	28.6	4	31.8	69.8	44.4	82.5	44.4	49.5	50.0	73.0	15.8
50	215.9	165.1	25.4	8	38.1	104.8	57.1	101.6	57.1	62.0	62.4	92.1	17.4
65	244.5	190.5	28.6	8	41.3	123.8	63.5	104.8	63.5	74.7	75.4	104.8	19.0
80	241.3	190.5	25.4	8	38.1	127.0	53.9	101.6	53.8	90.7	91.4	127.0	–
100	292.1	234.9	31.7	8	44.4	158.7	69.8	114.3	69.8	116.0	116.8	157.1	–
125	349.2	279.4	35.0	8	50.8	190.5	79.3	127.0	79.2	143.7	144.5	185.7	–
150	381.0	317.5	31.7	12	55.6	234.9	85.8	139.7	85.8	170.6	171.4	215.9	–
200	469.9	393.7	38.1	12	63.5	298.4	101.6	162.0	144.3	221.4	222.2	269.8	–
250	546.1	469.9	38.1	16	69.8	368.3	107.9	184.1	127.0	276.3	277.3	323.8	–
300	609.6	533.4	38.1	20	79.3	419.1	117.4	200.0	142.7	327.1	328.1	381.0	–

DIMENSION OF CLASS 1500 & 2500 FLANGE (B 16.5)



Dimension of Class 1500 Flanges as per ANSI B 16.5

Nominal Pipe Size	Flange Dia	Dia of Bolt Circle	Dia of Bolt Holes	No. of Holes	Thk of Flange	Dia. of Hub	Length through Hub			Dia of Bore		Dia of R/F	Depth of Socket
							S/O & S/W	W/N	L/J	S/O & S/W	L/J		
	O	A	D		C	E	Y	Y	Y	B	B	R	F
15	120.6	82.5	22.2	4	22.2	38.1	31.7	60.3	31.7	22.3	22.8	34.9	9.5
20	130.2	88.9	22.2	4	25.4	44.4	34.9	69.8	34.9	27.7	28.1	42.9	11.1
25	149.2	101.6	25.4	4	28.6	52.4	41.3	73.0	41.3	34.5	35.0	50.8	12.7
32	158.7	111.1	25.4	4	28.6	63.5	41.3	73.0	41.3	43.2	43.6	63.5	14.2
40	177.8	123.8	28.6	4	31.8	69.8	44.4	82.5	44.4	49.5	50.0	73.0	15.8
50	215.9	165.1	25.4	8	38.1	104.8	57.1	101.6	57.1	62.0	62.0	92.1	17.4
65	244.5	190.5	28.6	8	41.3	123.8	63.5	104.8	63.5	74.7	75.4	104.8	19.0
80	266.7	203.2	31.7	8	47.6	133.3	73.0	117.5	73.0	90.7	91.4	127.0	-
100	311.1	241.3	34.9	8	54.0	161.9	90.5	123.0	90.4	116.1	116.8	157.2	-
125	374.6	292.1	41.3	8	73.0	196.8	104.8	155.6	104.8	143.8	144.5	185.7	-
150	393.7	317.5	38.1	12	82.6	228.6	119.1	171.4	119.1	170.7	171.4	215.9	-
200	482.6	393.7	44.4	12	92.1	292.1	142.9	212.7	142.8	221.5	222.2	269.9	-
250	584.2	482.6	50.8	12	107.9	368.3	158.7	254.0	177.8	276.3	277.3	323.8	-
300	673.1	571.5	54.0	16	123.8	450.8	181.0	282.5	2189	327.1	328.1	381.0	-

Dimension of Class 2500 Flanges as per ANSI B 16.5

Nominal Pipe Size	Flange Dia	Dia of Bolt Circle	Dia of Bolt Holes	No. of Holes	Thk of Flange	Dia. of Hub	Length through Hub			Dia of Bore		Dia of R/F	Depth of Socket
							S/O & S/W	W/N	L/J	S/O & S/W	L/J		
	O	A	D		C	E	Y	Y	Y	B	B	R	F
15	133.3	88.9	22.2	4	30.2	42.9	39.7	73.0	39.7	22.3	22.3	34.9	-
20	139.7	95.2	22.2	4	31.7	50.8	42.9	79.4	42.9	27.7	27.7	42.9	-
25	158.7	107.9	25.4	4	34.9	57.1	47.7	88.9	47.7	34.5	34.5	50.8	-
32	184.1	130.2	28.6	4	38.1	73.0	52.4	95.2	52.4	43.2	43.2	63.5	-
40	203.2	146.0	31.7	4	44.4	79.4	60.3	111.1	60.3	49.5	49.5	73.0	-
50	234.9	171.4	28.6	8	50.8	95.2	69.8	127.0	69.8	62.4	62.0	92.1	-
65	266.7	196.8	31.7	8	57.1	114.3	79.4	142.9	79.4	74.7	74.7	104.8	-
80	304.8	228.6	34.9	8	66.7	133.3	92.1	168.3	92.1	90.7	90.7	127.0	-
100	355.6	273.0	41.3	8	76.2	165.1	107.9	190.5	107.9	116.1	116.1	157.2	-
125	419.1	323.8	47.6	8	92.1	203.2	130.0	228.6	130.0	143.8	143.8	185.7	-
150	482.6	368.3	54.0	8	107.9	234.9	152.4	273.0	152.4	170.7	107.7	215.9	-
200	552.4	438.1	54.0	12	127.0	304.8	177.8	317.5	177.8	221.5	221.5	269.9	-
250	673.1	539.7	66.7	12	165.1	374.6	228.6	419.1	228.6	276.3	276.3	323.8	-
300	762.0	619.1	73.0	12	184.1	441.3	254.0	463.5	254.0	327.1	327.1	381.0	-



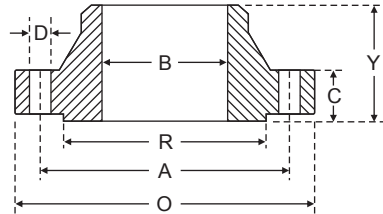
DIMENSIONAL TOLERANCES

Threaded, Socket-Welding, Slip-on, Lap Joint & Blind			
Outside	When O.D. is 24" or less	± 1/6" (16mm)	
Diameter	When O.D. is Over 24"	± 1/18" (3.2mm)	
Inside	Threaded	Within limits on Boring guage	
Diameter	Socket-Welding Slip on and Lap joint	10" & Smaller + 1/32" (3.2mm)-0" 12" & Larger + 1/16" (1.6mm)-0"	
Outside Diameter of Hub	12" and Smaller	+ 1/32" (0.8mm) -1/16" (1.6mm)	
	14" and Larger	± 1/8" (3.2mm)	
Diameter of contact Face	1/16" Raised Face	± 1/32" (0.8mm)	
	1/4" Raised Face Tongue & Groove Male, Female	± 1/64" (0.4mm)	
Diameter of counterbore Same as for Inside Diameter			
Drilling	Bolt Circle	± 1/16" (1.6mm)	
	Bolt hole spacing	± 1/32" (0.8mm)	
	Eccentricity of Bolt Circle with Respect to Facing	2 1/2" & Smaller	1/32" (0.8mm) max
		3" & Larger	1/16" (1.6mm) max
	Eccentricity of Bolt Circle with Respect to Bore	1/32" (0.8mm) max	
Eccentricity of Facing with Respect to Bore	1/32" (0.8mm) max		
Thickness	18" and Smaller	+ 1/8" (3.2mm)-0"	
	20" and Larger	+ 3/16" (4.8mm)-0"	
Length	10" and Smaller	± 1/16" (1.6mm)	
Thru Hub	12" and Larger	± 1/8" (3.2mm)	

Welding Neck			
Outside	When O.D. is 24" or less	± 1/6" (16mm)	
Diameter	When O.D. is Over 24"	± 1/18" (3.2mm)	
Inside	10" and Smaller	+ 1/32" (0.8mm)	
	12" thru 18"	+ 1/16" (1.6mm)	
Diameter	20" and Larger	+ 1/8" (3.2mm) - 1/16" (1.6mm)	
Diameter of Contact Face	1/16" Raised Face	+ 1/32" (0.8mm)	
	1/4" Raised Face Tongue & Groove Male, Female	+ 1/64" (0.4mm)	
Diameter of Hub at Base	When Hub Base is 24' or Smaller	1/16" (1.6mm)	
	When Hub Base is Over 24"	± 1/8" (3.2mm)	
Diameter of Hub at Point of Welding	5" and Smaller	+ 3/32" (2.4mm) - 1/32" (0.8mm)	
	6" and Larger	+ 5/32" (4.0mm) - 1/32" (0.8mm)	
Drilling	Bolt Circle	+ 1/16" (1.6mm)	
	Bolt hole spacing	+ 1/32" (0.8mm)	
	Eccentricity of Bolt Circle with Respect to Facing	2 1/2" & Smaller	1/32" (0.8mm) max
		3" & Larger	1/16" (1.6mm) max
Eccentricity of Bolt Circle with Respect to Bore	1/32" (0.8mm) max		
Eccentricity of Facing with Respect to Bore	1/32" (0.8mm) max		
Thickness	18" and Smaller	+ 1/8" (3.2mm)-0"	
	20" and Larger	+ 3/16" (4.8mm)-0"	
Length	10" and Smaller	+ 1/16" (1.6mm)	
Thru Hub	12" and Larger	+ 1/8" (3.2mm)	

WELDING NECK FLANGE BORES (B)

WELDING NECK FLANGE



Nominal Pipe Size	Outside Diam	Sch 20	Std 30	Std Wall	Sch 40	Extra Strong	Sch 80	Sch 120	Sch 160	Double Extra Strong
15	21.33	–	–	15.7	15.7	13.8	13.8	–	11.7	6.4
20	26.67	–	–	20.8	20.8	18.8	18.8	–	15.5	11.0
25	33.40	–	–	26.6	25.4	24.3	24.3	–	20.7	15.2
32	42.16	–	–	35.0	35.0	32.4	32.4	–	29.4	22.7
40	48.26	–	–	40.8	40.8	38.1	38.1	–	33.7	27.9
50	60.31	–	–	52.3	52.3	49.2	49.2	–	42.8	38.1
65	73.02	–	–	62.4	62.4	59.0	59.0	–	53.9	44.9
80	88.90	–	–	77.9	77.9	73.6	73.6	–	66.6	58.4
100	114.30	–	–	102.2	102.2	97.1	97.1	92.0	87.3	80.0
125	141.30	–	–	128.1	128.1	122.2	122.2	115.9	109.5	103.2
150	168.27	–	–	154.0	154.0	146.3	146.3	139.7	131.7	124.3
200	219.07	206.2	204.9	202.7	202.7	193.6	193.6	182.5	173.0	174.6
250	273.05	260.3	257.4	254.5	254.5	247.6	242.8	230.1	215.9	222.2
300	323.85	311.1	307.0	304.8	303.2	298.4	288.8	273.0	257.2	273.0
350	355.60	337.8	336.5	336.5	333.3	330.2	317.5	300.0	284.1	–
400	406.40	390.3	387.3	387.3	381.0	381.0	363.5	344.5	325.4	–
450	457.20	441.1	434.9	438.1	428.6	431.8	409.5	387.3	366.7	–
500	508.00	488.9	482.6	488.9	477.8	482.6	455.6	431.8	407.9	–
600	609.60	590.5	581.0	590.5	574.6	584.2	547.6	517.5	490.5	–



FLANGES STANDARD

**DIN 2633 Flanges Standard
NENNDRUCK 16
(Nominal Pressure 16 Kg/Cm²)**

Nom. Bore	PIPE		FLANGE			BOLTING			Height H
	Out-side Dia.	Thik-ness	Out-side Dia.	Thik-ness	Bolt Circle Dia.	No. of Bolt	Thread	Bolt hole Dia.	
10	22	6	90	14	60	4	M12	14	35
15	25	6	95	14	65	4	M12	14	35
20	33	6.5	105	16	75	4	M12	14	38
25	39	7	115	16	85	4	M12	14	38
32	46	7	140	16	100	4	M16	18	40
40	55	7.5	150	16	110	4	M16	18	42
50	65	7.5	165	18	125	4	M16	18	45
65	86	8	185	18	145	4	M16	18	45
80	97	8.5	200	20	160	8	M16	18	50
100	119	9.5	220	20	180	8	M16	18	52
125	145	10	250	22	210	8	M16	18	55
150	172	11	285	22	240	8	M20	23	55
175	199	12	315	24	270	8	M20	23	60
200	224	12	340	24	295	12	M20	23	62
250	278	14	405	26	355	12	M24	27	70
300	330	15	460	28	410	12	M24	27	78
350	382	16	520	30	470	16	M24	27	82
400	436	18	580	32	525	16	M27	30	85
500	542	21	715	36	650	20	M30	33	90
600	646	23	840	40	770	20	M33	36	95

**10 / DIN 2634 Flanges Standard
NENNDRUCK 25
(Nominal Pressure 25 Kg/Cm²)**

Nom. Bore	PIPE		FLANGE			BOLTING			Height H
	Out-side Dia.	Thik-ness	Out-side Dia.	Thik-ness	Bolt Circle Dia.	No. of Bolt	Thread	Bolt hole Dia.	
10	22	6	90	16	60	4	M12	14	35
15	25	6	95	16	65	4	M12	14	35
20	33	6.5	105	18	75	4	M12	14	38
25	39	7	115	18	85	4	M12	14	38
32	46	7	140	18	100	4	M16	18	40
40	55	7.5	150	18	110	4	M16	18	42
50	65	7.5	165	20	125	4	M16	18	45
65	86	8	185	22	145	8	M16	18	45
80	97	8.5	200	24	160	8	M16	18	50
100	119	9.5	235	24	190	8	M20	23	52
125	145	10	270	26	220	8	M24	27	55
150	172	11	300	28	250	8	M24	27	55
175	199	12	330	28	280	12	M24	27	75
200	224	12	360	30	310	12	M24	27	80
250	278	14	425	32	370	12	M27	30	88
300	330	15	485	34	430	16	M27	30	92
350	382	16	555	38	490	16	M30	33	100
400	436	18	620	40	550	16	M33	36	110
500	542	21	730	44	660	20	M33	36	125
600	646	23	845	46	770	20	M36	39	125

**DIN 2636 Flanges Standard
NENNDRUCK 64
(Nominal Pressure 64 Kg/Cm²)**

Nom. Bore	PIPE		FLANGE			BOLTING			Height H
	Thik-ness Dia.	Out-side Dia.	Thik-ness	Bolt Circle Dia.	No. of Bolt	Thread	Bolt hole Dia.		
10	8	100	20	70	4	M12	14	35	
15	8	105	20	75	4	M16	14	38	
25	9	140	24	100	4	M20	18	40	
40	9	170	26	125	4	M20	23	40	
50	10	180	26	135	4	M20	23	62	
65	10	205	26	160	8	M20	23	68	
80	11	215	28	170	8	M24	23	72	
100	12	250	30	200	8	M27	27	78	
125	13	295	34	240	8	M30	30	88	
150	14	345	36	280	8	M30	33	95	
175	15	375	40	310	12	M33	33	105	
200	16	415	42	345	12	M33	36	110	
250	19	470	46	400	12	M33	36	125	
300	21	530	52	460	16	M39	36	140	
350	23	600	56	525	16	M36	39	150	
400	26	670	60	585	16	M39	42	160	
500	31	800	68	705	20	M45	48		
600	35	930	76	820	20	M52	56		

**DIN 2635 Flanges Standard
NENNDRUCK 40
(Nominal Pressure 40 Kg/Cm²)**

Nom. Bore	PIPE		FLANGE			BOLTING			Height H
	Out-side Dia.	Thik-ness	Out-side Dia.	Thik-ness	Bolt Circle Dia.	No. of Bolt	Thread	Bolt hole Dia.	
10	22	6	90	16	60	4	M12	14	35
15	25	6	95	16	65	4	M12	14	38
20	33	6.5	105	18	75	4	M12	14	40
25	39	7	115	18	85	4	M12	14	40
32	46	7	140	18	100	4	M16	18	42
40	55	7.5	150	18	110	4	M16	18	45
50	66	8	165	20	125	4	M16	18	48
65	87	8.5	185	22	145	8	M16	18	52
80	98	9	200	24	160	8	M16	18	58
100	120	10	235	24	190	8	M20	23	63
125	147	11	270	26	220	8	M24	27	68
150	174	12	300	28	250	8	M24	27	75
175	201	13	350	32	295	12	M27	30	82
200	228	14	375	34	320	12	M27	30	88
250	282	16	450	38	385	12	M30	33	105
300	334	17	515	42	450	16	M30	33	115
350	388	19	580	46	510	16	M33	36	125
400	442	21	660	50	585	16	M36	39	135
500	542	21	755	52	670	20	M39	42	140
600	648	24	890	60	795	20	M45	48	-

DIMENSION OF PIPE FLANGES AS PER TABLE BS -10

Table D: For Working Steam Pressure upto 50 lbs per sq. inch

Nominal Pipe size	O.D of Pipe	Dia. of Flange	Dia. of Bolt Circle	No. of Bolt	Dia. of Bolt	Thickness
1/2"	21.3	95.3	66.7	4	12.7	4.8
3/4"	26.7	101.6	73.0	4	12.7	4.8
1"	33.4	114.3	82.6	4	12.7	4.8
1 1/4"	42.2	120.7	87.6	4	12.7	6.4
1 1/2"	48.3	133.4	98.4	4	12.7	6.4
2"	60.3	152.4	114.3	4	15.9	7.9
2 1/2"	73.0	165.1	127.0	4	15.9	7.9
3"	88.9	184.2	146.1	4	15.9	9.5
3 1/2"	101.6	203.2	165.1	4	15.9	9.5
4"	114.3	215.9	177.8	4	15.9	9.5
5"	141.3	254.0	209.6	8	15.9	12.7
6"	168.3	279.4	228.6	8	15.9	12.7
7"	190.5	304.8	260.4	8	15.9	12.7
8"	219.1	336.6	292.1	8	15.9	12.7
9"	244.5	368.3	323.9	8	15.9	15.9
10"	273.0	406.4	355.6	8	19.1	15.9
12"	323.9	457.2	406.4	12	19.1	15.9
14"	355.6	527.1	469.9	12	22.2	19.1
16"	406.4	577.9	520.7	12	22.2	19.1
18"	457.2	641.4	584.2	12	22.2	22.2
20"	508.0	704.9	641.4	16	22.5	25.4
24"	609.6	825.5	755.7	16	25.4	28.6

Table D: For Working Steam Pressure 50 lbs upto 100 lbs per sq. inch

Nominal Pipe Size	Dia. of Flange	Dia. of Bolt Circle	No. of Bolt	Dia. of Bolt	Thickness
1/2"	95.3	66.7	4	12.7	6.4
3/4"	101.6	73.0	4	12.7	6.4
1"	114.3	82.6	4	12.7	7.1
1 1/4"	120.7	87.3	4	12.7	7.9
1 1/2"	133.4	98.4	4	12.7	8.7
2"	152.4	114.3	4	15.9	9.5
2 1/2"	165.1	127.0	4	15.9	10.3
3"	184.2	146.1	4	15.9	11.1
3 1/2"	203.2	165.1	8	15.9	11.9
4"	215.9	177.8	8	15.9	12.7
5"	254.0	209.6	8	15.9	14.3
6"	279.4	228.6	8	19.1	17.5
7"	304.8	260.4	8	19.1	19.1
8"	336.6	292.1	8	19.1	19.1
9"	368.3	323.9	12	19.1	20.6
10"	406.4	355.6	12	19.1	22.2
12"	457.2	406.4	12	22.2	25.4
14"	527.2	469.9	12	22.2	25.4
16"	577.9	520.7	12	22.2	25.4
18"	641.4	584.2	16	22.2	28.6
20"	704.9	647.4	16	22.2	31.8
24"	825.5	755.7	16	25.4	38.1

Table F: For Working Steam Pressure above 100 lbs and upto 150 lbs per sq. inch

Nominal Pipe Size	O.D. of Pipe	Dia of Flange	Dia of Bolt Circle	No. of Bolt	Dia. of Bolt	Thickness
1/2"	21.3	95.3	66.7	4	12.7	9.5
3/4"	26.7	101.6	73.0	4	12.7	9.5
1"	33.4	120.7	87.3	4	15.9	9.5
1 1/4"	42.2	133.4	98.4	4	15.9	12.7
1 1/2"	48.3	139.7	104.8	4	15.9	12.7
2"	60.3	165.1	127.0	4	15.9	15.9
2 1/2"	73.0	184.2	146.1	8	15.9	15.9
3"	88.9	203.2	165.1	8	15.9	15.9
3 1/2"	101.6	215.9	177.8	8	15.9	19.1
4"	114.3	228.6	190.5	8	15.9	19.1
5"	141.3	279.4	235.0	8	19.1	22.2
6"	168.3	304.8	260.4	12	19.1	22.2
7"	190.3	336.6	292.1	12	19.1	22.2
8"	219.1	368.3	323.9	12	19.1	25.4
9"	244.5	406.4	355.6	12	22.2	25.4
10"	273.0	431.8	381.0	12	22.2	25.4
12"	323.0	489.0	438.2	16	22.2	28.6
14"	355.6	552.5	495.3	16	25.4	31.8
16"	406.4	609.6	552.5	20	25.4	31.8
18"	457.2	673.1	609.6	20	28.6	34.9
20"	508.0	736.6	673.1	24	28.6	38.1
24"	609.6	850.9	781.1	24	31.8	41.3

Table F: For Working Steam Pressure above 150 lbs and upto 250 lbs per sq. inch

Nominal Pipe size	Dia of Flange	Dia. of Bolt Circle	No. of Bolt	Dia. of Bolt	Thickness
1/2"	114.3	82.6	4	15.9	12.7
3/4"	114.3	82.6	4	15.9	12.7
1"	120.78	87.3	4	15.9	14.3
1 1/4"	133.4	98.4	4	15.9	17.5
1 1/2"	139.7	104.8	4	15.9	17.5
2"	165.1	127.0	4	15.9	19.1
2 1/2"	184.2	146.1	8	15.9	19.1
3"	203.2	165.1	8	15.9	22.2
3 1/2"	215.9	177.8	8	15.9	22.2
4"	228.6	190.5	8	15.9	25.4
5"	279.4	235.0	8	19.1	28.6
6"	304.8	260.4	12	19.1	28.6
7"	336.6	292.1	12	19.1	31.8
8"	368.3	323.9	12	19.1	31.8
9"	406.4	355.6	12	22.2	34.9
10"	431.8	381.0	12	22.2	34.9
12"	489.0	438.2	16	22.2	38.1
14"	552.5	495.3	16	25.4	41.3
16"	609.6	552.5	20	25.4	44.5
18"	673.1	609.6	20	28.6	47.6
20"	736.6	673.1	24	28.6	50.8
24"	850.9	781.1	25	31.8	57.2



SOCKET WELD FITTING TO ANSI B-16.11

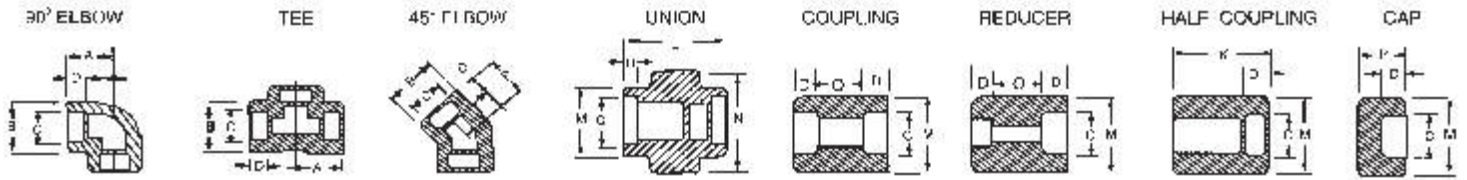
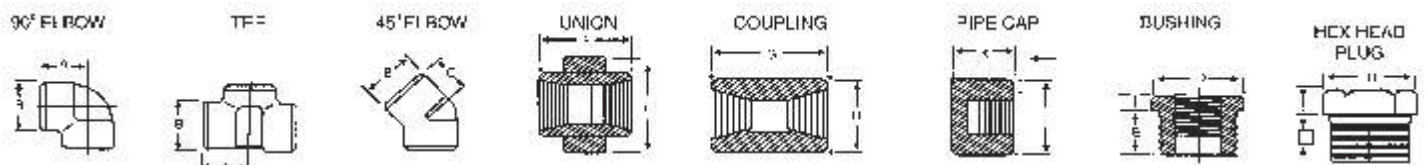


Table F: For Working Steam Pressure above 100 lbs and upto 150 lbs per sq. inch

NOM BORE	PIPE O.D.	3000 LBS.									COMMON FACTORS				6000 LBS.				
		A max.	B max.	K	J	L	M	N	P	Q	C min.	D min.	O min.	O max.	A	B	M	K	N
1/8"	10.3	22	18.5	26	16	40	17.3	32	15	10	10.7	10	5	8	22	22	20	25	46
1/4"	13.7	22	22	26	18	43	21.2	32	15	10	14.1	10	5	8	27	25	24	25	51
3/8"	17.2	25	25	26	19	48	25.4	36	16.5	10	17.6	10	3	9	27	28	28	26	60
1/2"	21.3	27	32	30	21	51	31	41	16.5	10	21.7	10	6	13	31	34	34	31	72
3/4"	26.7	34	38	36	24	57	37	50	19.5	13	27	13	6	13	37	42	41	35	80
1"	33.4	37	46	40	25	64	45.2	60	22.5	13	33.8	13	9	17	42	50	50	40	94
1 1/4"	42.2	42	56	40	29	70	55	70	22.5	13	42.6	13	9	17	47	59	58	41	100
1 1/2"	48.3	47	62	40	30	79	61.4	78	24	13	48.7	13	9	17	53	67	66	43	122
2"	60.3	56	75	52	37	89	75	95	29	13	61.2	16	15	23	59	84	83	55	
2 1/2"	73.02	60	92	52	48	114	91.3	125	32	16	73.8	16	14	24		102		56	
3"	89.00	76	110	52	51	127	108.8	140	35	16	89.8	16	14	24		121		58	
4"	114.50	88	137	58		150	136.9		42	19	115.5	19	14	24		152		64	

FORGED SCREWED FITTING TO ANSI B-16.11 3000/6000 LBS. THREADED TO ASA B 2.1



(DIMENSIONS IN MM)

NOM BORE	PIPE O.D.	3000 LBS						COMMON FACTORS						6000 LBS					
		A	B	c	G	H	K	D	E	F	I	J	L	A	B	C	G	H	K
1/8"	10.3	21	22	17	32	16	19	11	10	40	-	6	-	25	25	19	32-	22	-
1/4"	13.7	25	25	19	35	19	25	16	11	43	3	6	32	29	33	22	35	25	27
3/8"	17.2	29	33	22	38	22	25	17.5	13	48	4	8	38	33	38	25	38	32	27
1/2"	21.3	33	38	25	48	29	32	22	15	51	5	8	46	38	46	29	48	38	33
3/4"	26.7	38	46	29	51	35	37	27	16	57	6	10	51	44	56	33	51	44	38
1"	33.4	44	56	33	60	44	41	35	19	64	6	10	60	51	62	35	60	57	43
1 1/4"	42.2	51	62	35	67	57	44	44.5	21	70	7	14	72	60	75	43	67	64	46
1 1/2"	48.3	60	75	43	79	64	44	51	21	79	8	16	80	64	84	44	79	76	48
2"	60.3	64	84	45	86	76	48	63.5	22	88	9	17	94	83	102	52	86	92	51
2 1/2"	73.02	83	102	52	92	92	60	76	27	118	10	21	122	95	121	64	92	108	64
3"	89.0	95	121	64	108	108	65	89	29	121	10	25	140	106	146	79	108	127	68
4"	114.5	114	152	79	121	140	68	117.5	32	150	13	25	180	114	152	79	121	159	75

DIMENSIONS AND OTHERS SPECIFICATIONS AS PER CUSTOMERS REQUIREMENTS ARE AVAILABLE ON REQUEST

OUR ESTEEMED CLIENTS :

- 1 Bharat Heavy Electricals Limited
- 2 Reliance Group of Industries Limited
- 3 Kaddass Oil feild
- 4 Finolex Industries Limited
- 5 Hindustan Petroleum Corporation Limited
- 6 Oil & Natural Gas Corporation
- 7 Bharat Earth Movers Limited
- 8 Bharat Electronics Limited
- 9 Indian Farmers & Fertilizers C-operative Limited
- 10 Ordanance Factory
- 11 Rajasthan Stete Mines & Minerals Limited
- 12 Mazagaon Dock Limited
- 13 Engineers India Limited
- 14 Punj Lloyd Limited
- 15 Shree Cement Limited
- 16 Hindustan Construction Limited
- 17 GEI Industrial Systems Limited
- 18 National Fertilizers Limited

and many more.....





ti FITTINGS

TUBES INDIA SUBSIDIARY

11/15, Maruti Mandir Marg, Kumbharwada 5th Lane, Mumbai-400 004. India.
Tel.: + 91-22-23872077 / 66518739 / 23852795 Fax : + 91-22-23806388
E-mail: marketing@tubesindia.co.in Website : www.tubesindia.co.in